



JBT J.B. TRIMBLE, INC.
6445 Powers Ferry Road,
Suite 100
Atlanta, GA 30339
www.jbtinc.com

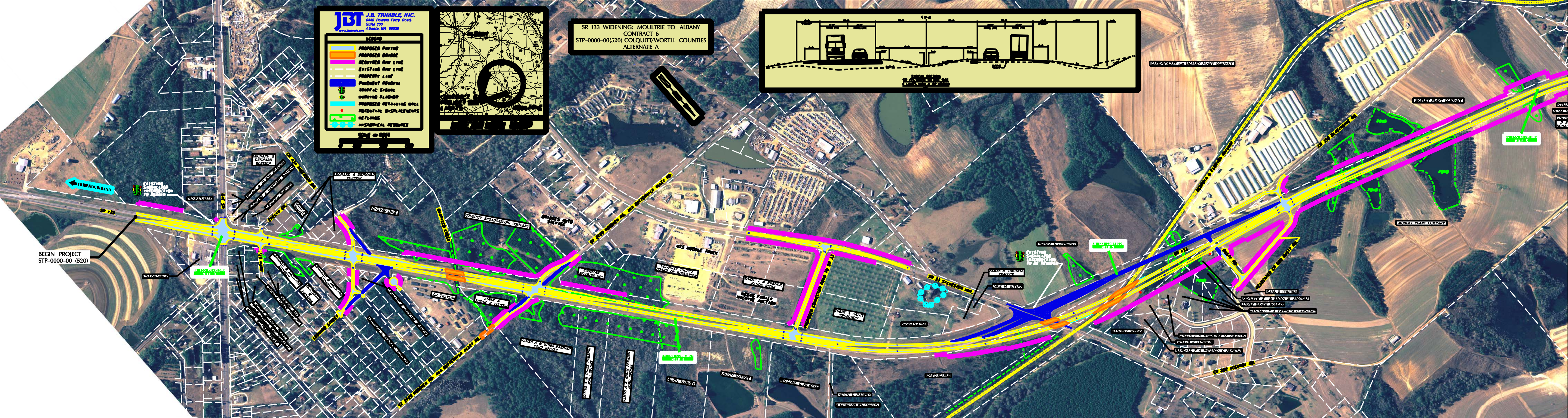
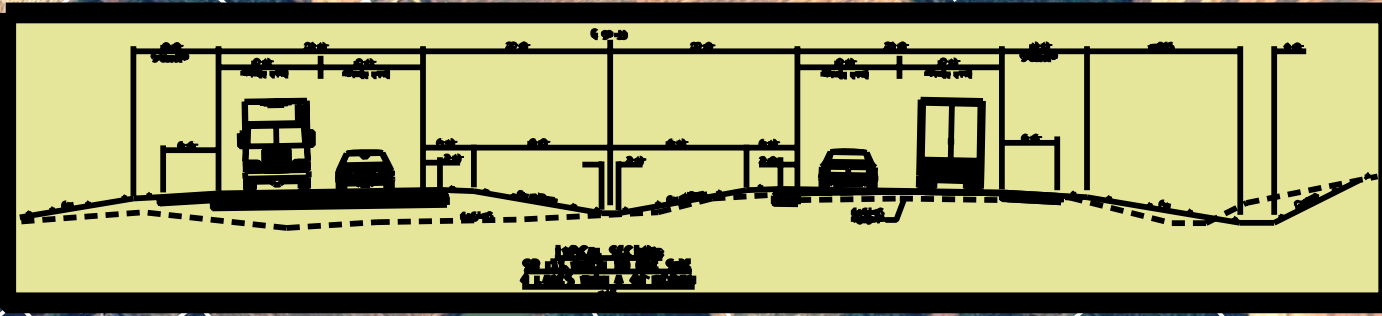
LEGEND

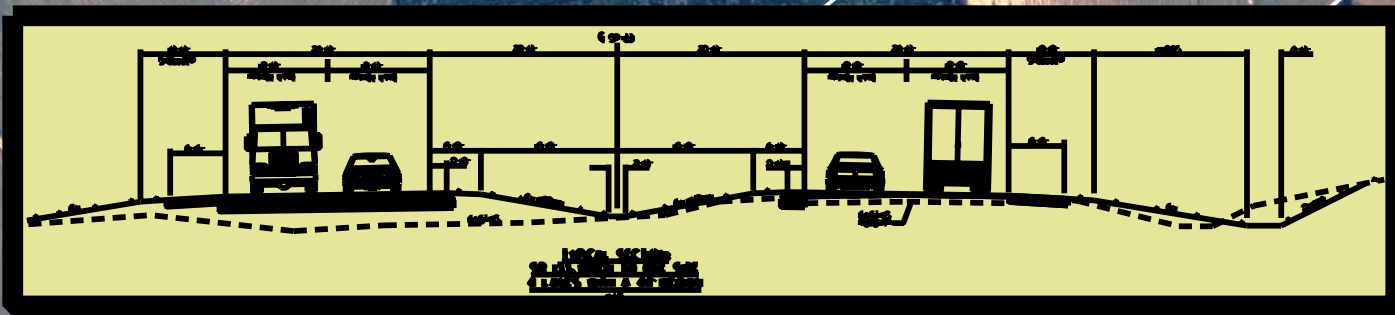
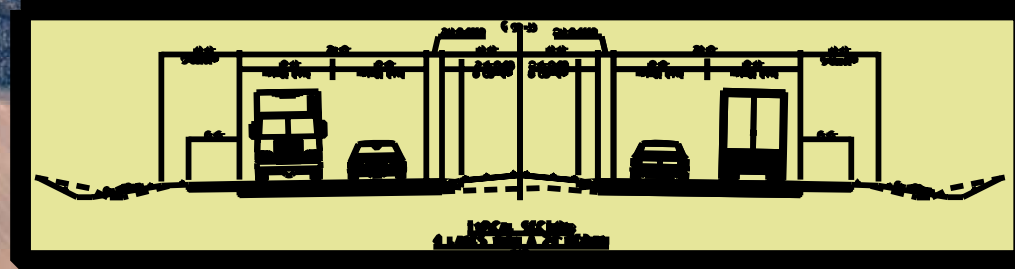
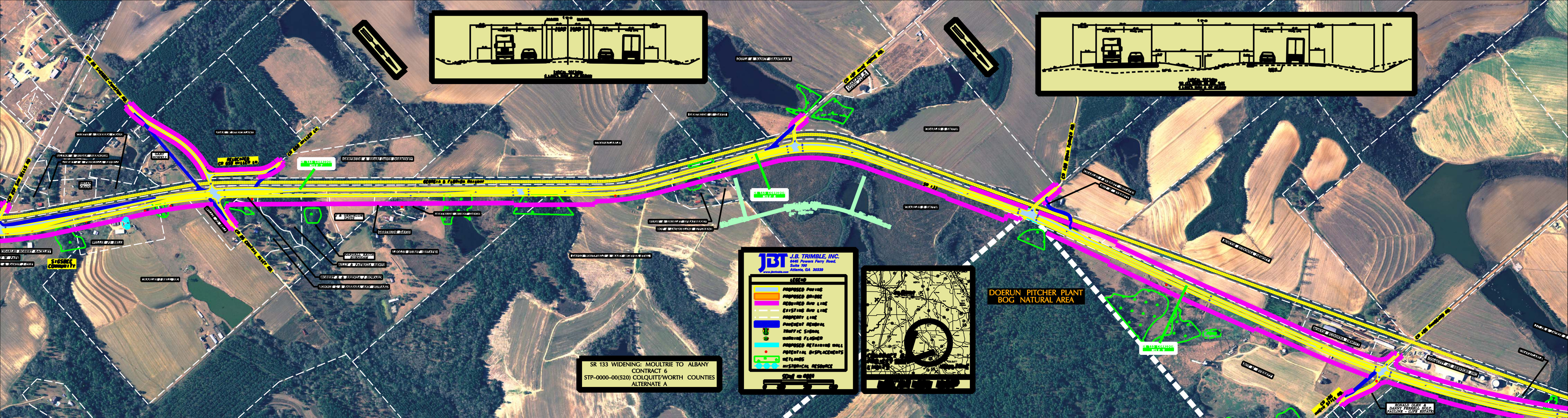
- PROPOSED PAVERS
- PROPOSED GRAD
- REQUIRED ROW LINE
- EXISTING ROW LINE
- PROPERTY LINE
- PROPOSED MEDIAN
- TRAFFIC SIGNAL
- RAISING FLANGES
- PROPOSED RETAINING WALL
- POTENTIAL DISPLACEMENTS
- WETLANDS
- HISTORICAL RESOURCE

Scale: 1" = 400'



SR 133 WIDENING: MOULTRIE TO ALBANY
CONTRACT 6
STP-0000-00(520) COLQUITT/WORTH COUNTIES
ALTERNATE A





SR 133 WIDENING: MOULTRIE TO ALBANY
 CONTRACT 6
 STP-0000-00(520) COLQUITT/WORTH COUNTIES
 ALTERNATE A

JBT J.B. TRIMBLE, INC.
 646 Powers Ferry Road,
 Suite 100
 Atlanta, GA 30339
www.jbtinc.com

LEGEND

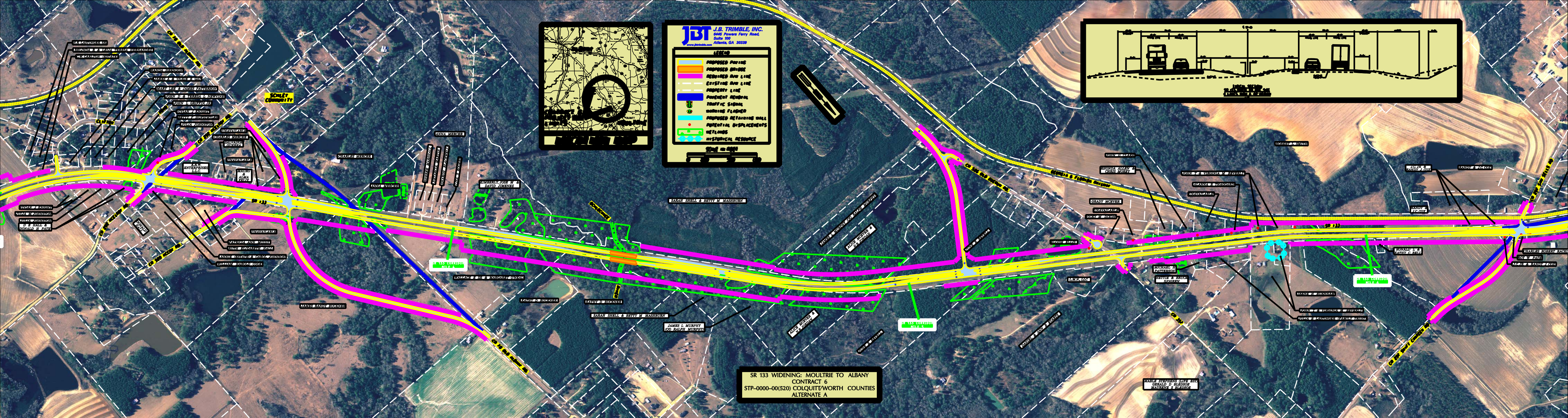
- PROPOSED PAVING
- PROPOSED BRIDGE
- REQUIRED AVE LINE
- EXISTING AVE LINE
- PROPERTY LINE
- PROPOSED ALIGNMENT
- TRAFFIC SIGNAL
- WARNING FLAGGER
- PROPOSED RETAINING WALL
- PROPOSED DISPLACEMENT
- WETLANDS
- HISTORICAL RESOURCE

Scale: 1" = 400'



DOERUN PITCHER PLANT
 BOG NATURAL AREA

RONALD OLEN &
 DANNY FERRELL BOHR
 PAULINA - (LIFE ESTATE)



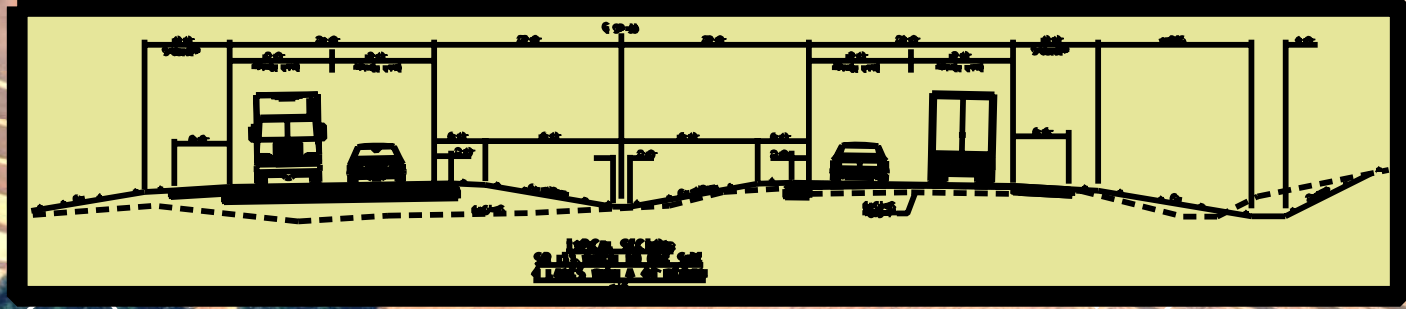
JBT J.B. TRIMBLE, INC.
6445 Powers Ferry Road,
Suite 100
Atlanta, GA 30339
www.jbtinc.com

LEGEND

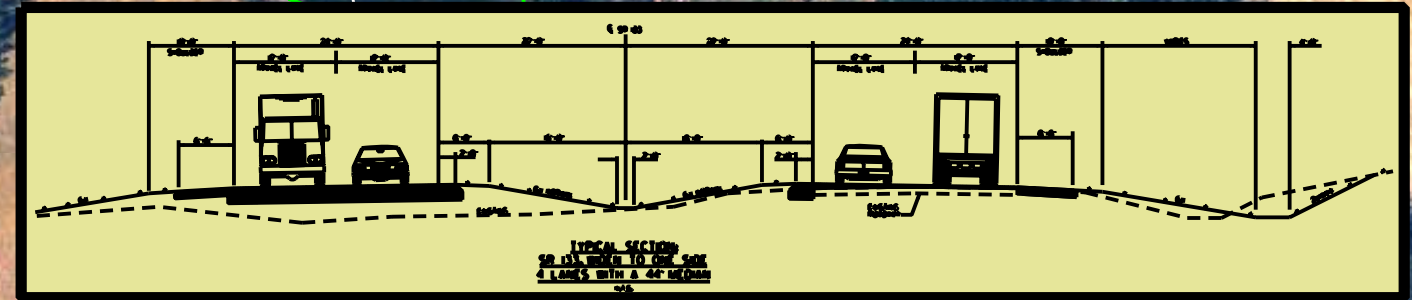
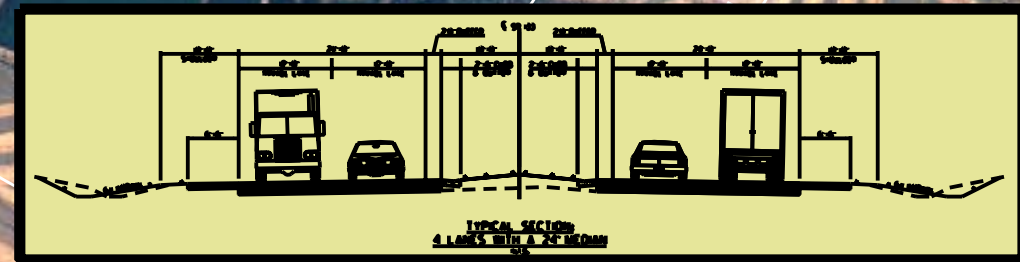
- PROPOSED PAVING
- PROPOSED DRAINAGE
- PROPOSED AVI LINE
- EXISTING AVI LINE
- PROPOSED RETAINING WALL
- POTENTIAL DISPLACEMENTS
- HISTORICAL RESOURCES

SYMBOLS

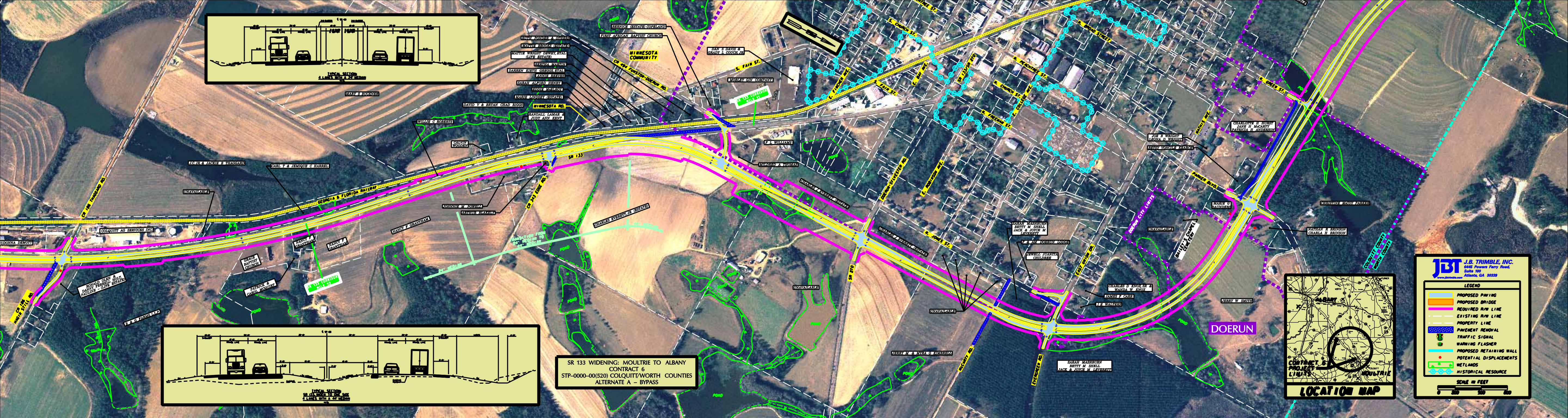
- ROAD RIGHT-OF-WAY



SR 133 WIDENING: MOULTRIE TO ALBANY
CONTRACT 6
STP-0000-00(520) COLQUITT/WORTH COUNTIES
ALTERNATE A



SR 133 WIDENING: MOULTRIE TO ALBANY
CONTRACT 6
STP-0000-00(520) COLQUITT/WORTH COUNTIES
ALTERNATE A - BYPASS

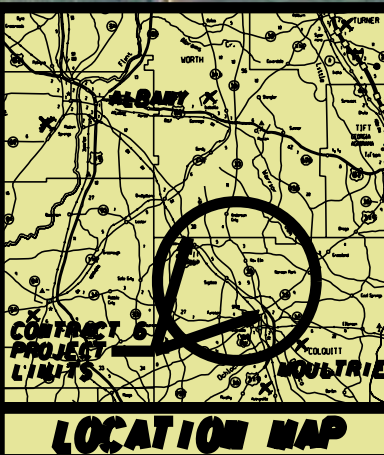


JBT J.B. TRIMBLE, INC.
6645 Powers Ferry Road,
Suite 100
Atlanta, GA 30339
www.trimble.com

LEGEND

- PROPOSED PAVING
- REQUIRED R/W LINE
- EXISTING R/W LINE
- PROPERTY LINE
- PAVEMENT REMOVAL
- TRAFFIC SIGNAL
- WARNING FLASHER
- PROPOSED RETAINING WALL
- POTENTIAL DISPLACEMENTS
- WETLANDS
- HISTORICAL RESOURCE

SCALE IN FEET
0 200 400



JBT J.B. TRIMBLE, INC.
6445 Powers Ferry Road,
Suite 100
Atlanta, GA 30339
www.jbtrimble.com

LEGEND

- PROPOSED PAVING
- PROPOSED BRIDGE
- REQUIRED R/W LINE
- EXISTING R/W LINE
- PROPERTY LINE
- PAVEMENT REMOVAL
- TRAFFIC SIGNAL
- WARNING FLASHER
- PROPOSED RETAINING WALL
- POTENTIAL DISPLACEMENTS
- WETLANDS
- HISTORICAL RESOURCE

SCALE IN FEET
0 200 400

